

Topic

This technical note describes changes to the Automator Serial Communications effective in Openlab 3.1.5r5 and higher.

Discussion

This feature is available in Openlab 3.1.5r5 and later. It is only available on systems with the Automator or Automator Lite modules.

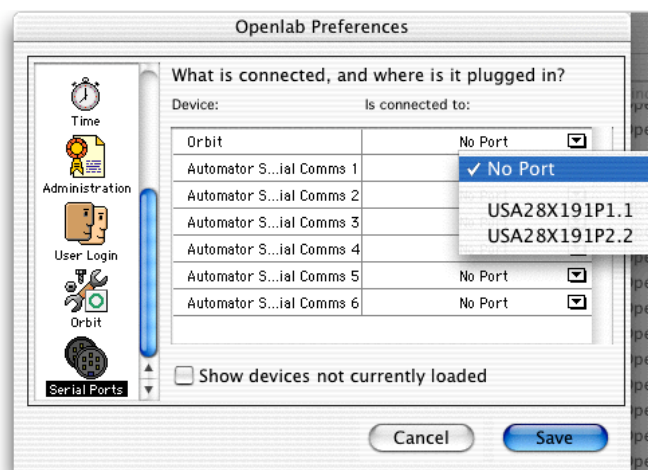
Automator Serial Communications allow serial lines or bytes to be sent and received by the Openlab Automator.

The expansion of the Automator serial communications in Openlab 3.1.5r5 and higher allows serial communication with more than one device and allows the automator to add serial communications to devices which are already supported by Openlab.

In the Openlab preferences it is now possible to configure serial ports for up to 6 lines of serial communication.

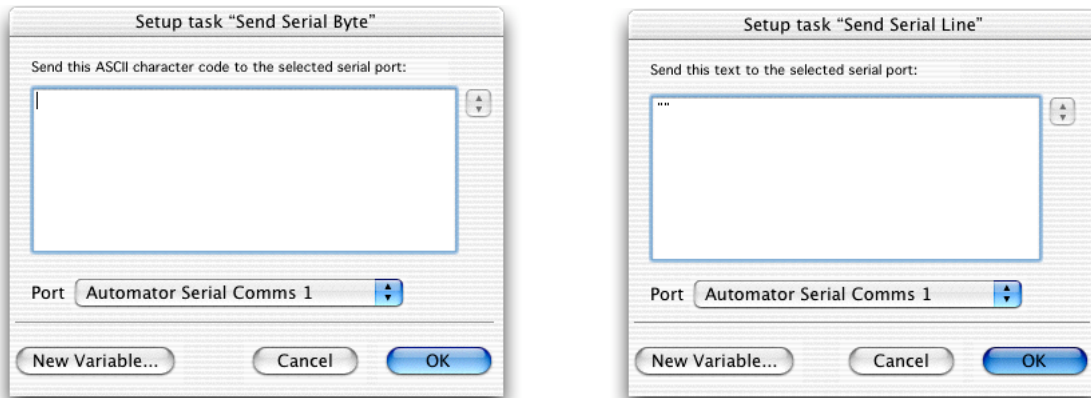
Controlling a device with Automator Serial Communications

1. The device to be controlled should be connected to the computer via a serial cable, with the appropriate USB to serial adapter if necessary.
2. In the Openlab Preferences set one of the Automator Serial Comms devices (1-6) to the port to which the device to be controlled was connected in step 1.



3. Save the preferences.

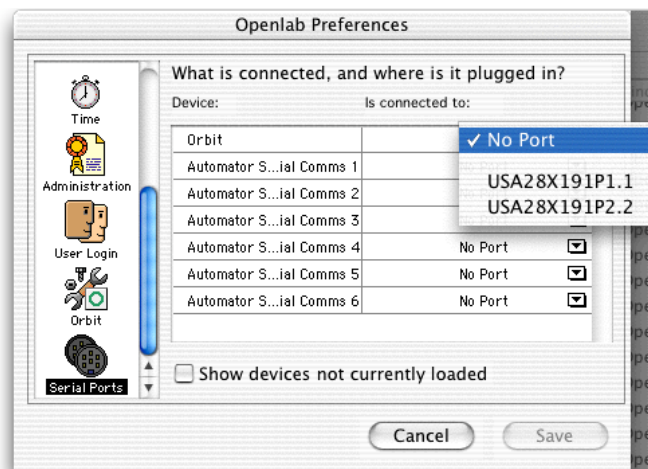
4. In the Serial Comms. Automator tasks send to, or receive from, the Automator Serial Comms port that was set for your desired device in step 2. Use the documentation supplied by the manufacturer of the device to determine the appropriate serial commands to use.



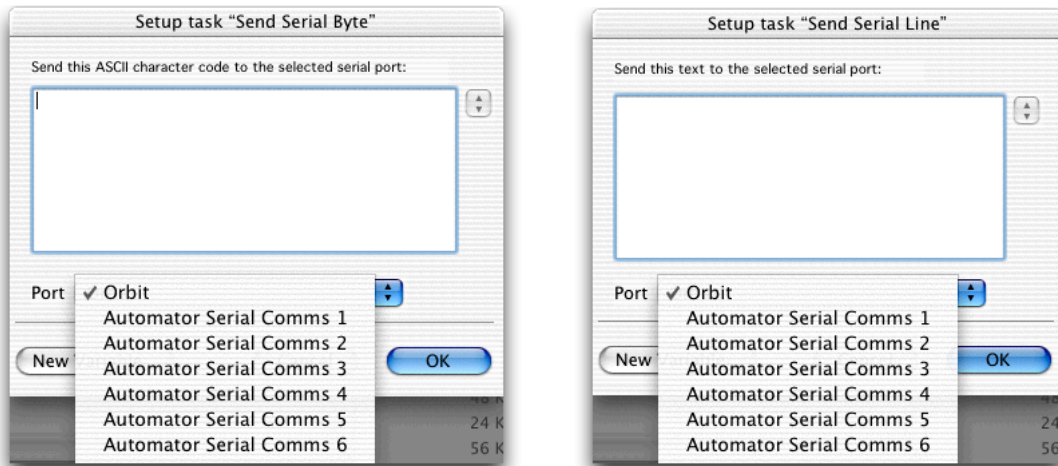
Important note: Improvisation Technical support cannot offer technical assistance to users controlling unsupported hardware.

Sending or receiving serial commands to or from a device which is already connected to Openlab.

1. Configure the serial port preferences for the device as normal. For example to control Orbit hardware using Openlab the device “Orbit” is assigned a serial port.



2. In the Automator Serial Comms. Tasks the “Port” pop up will have “Orbit” as one of the options, select this.



3. Any commands sent to the port “Orbit” will join the serial queue for that device.

Important note: Improvisation technical support cannot offer technical assistance to users operating unsupported features on supported devices.