

Topic

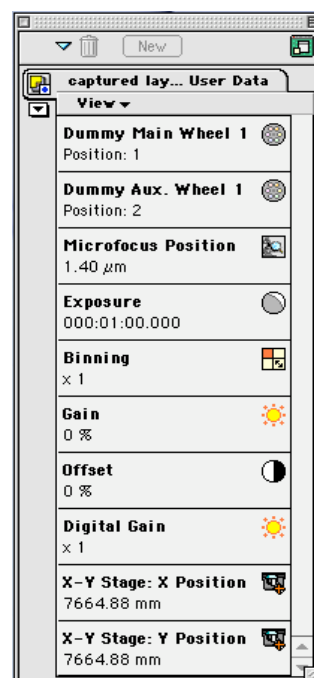
This technical note describes the use of the Openlab User Data module. The User Data module provides a palette which displays all the user data attached to a layer.

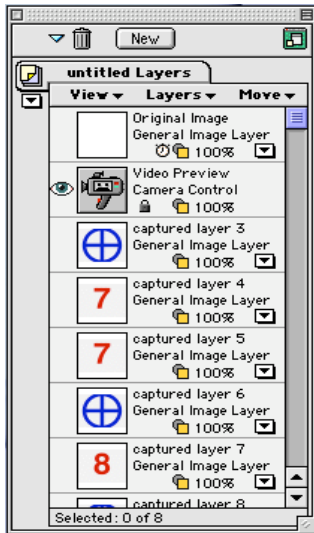
Discussion

Openlab allows numeric and text data to be attached to layers. In the past the only way to see this data was through the Automator or the Measurements table. The User Data palette provides a much easier way to visualise this information.

Starting with Openlab 3.5, system settings are saved as user data with acquired images. This information includes binning, gain, offset, exposure, filter wheel positions, X-Y stage positioning, focus position and microscope set-up. The User Data palette provides a convenient way to view this data. The following information is stored at the time of writing:

Exposure	shown in minutes, seconds or milliseconds
Binning	1x1, 2x2, 4x4 etc (dependant on camera make and model)
Gain	shown as a percentage or factor
Digital Gain	shown as a multiple
Offset	shown as a percentage or factor
X-Y Stage	shows X and Y coordinates of stage in μm or mm
Focus Drive	shown in μm
Microfocus	shown in μm
Polychrome	shows wavelength in nm
Filter Wheel	shows position for each wheel
Objective	shows objective turret position
Halogen Lamp	shows lamp voltage





The User Data module shows the user data for the image that has been selected in the Layers Manager palette.

If you do not require all of the information displayed in the User Data palette, it is possible to select only the information that you required via the “View” menu. You can choose “Show All”, “Show None” or select combinations of individual options.

